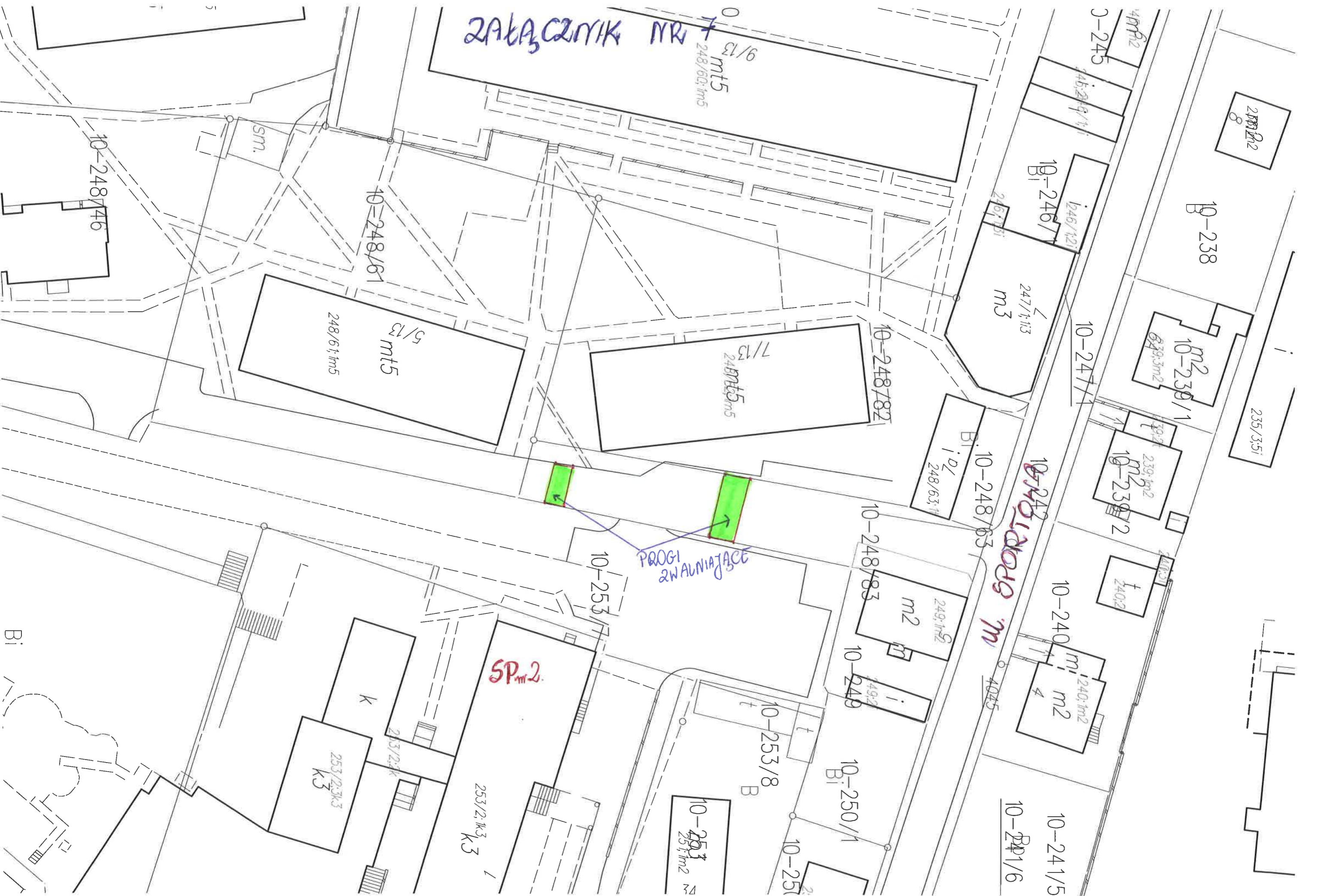


ZAKŁADNIK NR 7

9/13  
m15  
248/60; m5



238/2/2

B-238

10-239/1  
m2  
849;3m2

235/3;5i

10-239/2  
m2  
239;1m2

240;2

10-240

1240;1m2  
m2  
4

10-241/6

10-241/5

10-242  
10-243  
10-244  
10-245  
10-246  
10-247  
10-248  
10-249  
10-250  
10-251  
10-252  
10-253  
10-254  
10-255  
10-256  
10-257  
10-258  
10-259  
10-260  
10-261  
10-262  
10-263  
10-264  
10-265  
10-266  
10-267  
10-268  
10-269  
10-270  
10-271  
10-272  
10-273  
10-274  
10-275  
10-276  
10-277  
10-278  
10-279  
10-280  
10-281  
10-282  
10-283  
10-284  
10-285  
10-286  
10-287  
10-288  
10-289  
10-290  
10-291  
10-292  
10-293  
10-294  
10-295  
10-296  
10-297  
10-298  
10-299  
10-300

10-245

B1-246/1

246/1;1

247/4;1;3  
m3

10-248/63

B1-248/63

10-248/83

249;1;5  
m2

10-249

B1-250/1

10-253/8

10-253  
253;1;1m2

10-253/7

SPm.2.

253/2;1;3  
K3

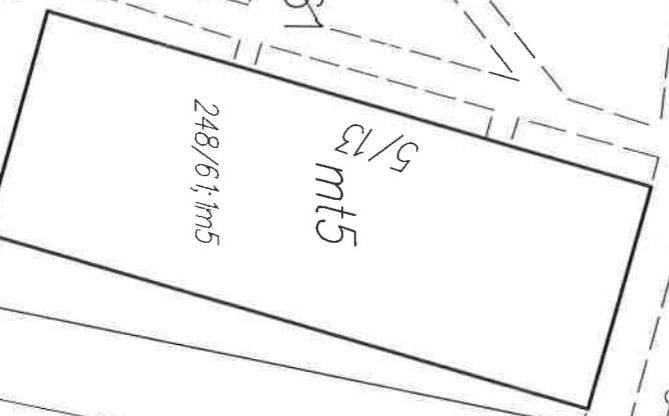
k

253/2;3;3  
K3

248/6;1;5  
m5

5/13  
m15

10-248/61



sm.

10-248/46

Bi